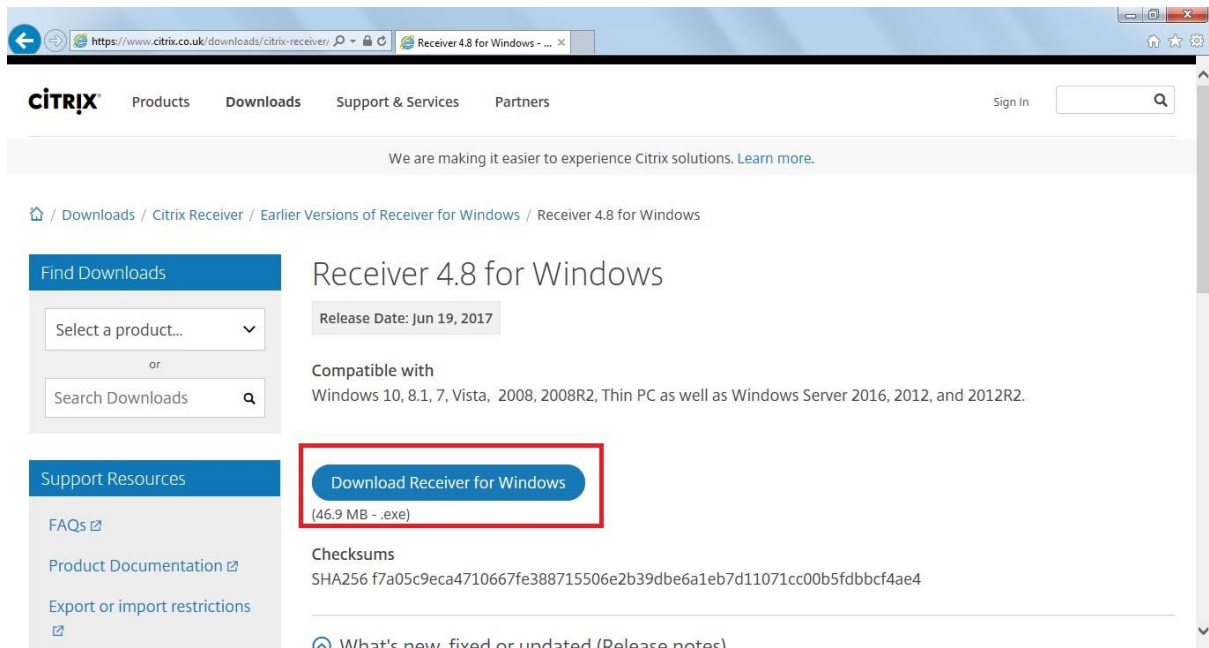


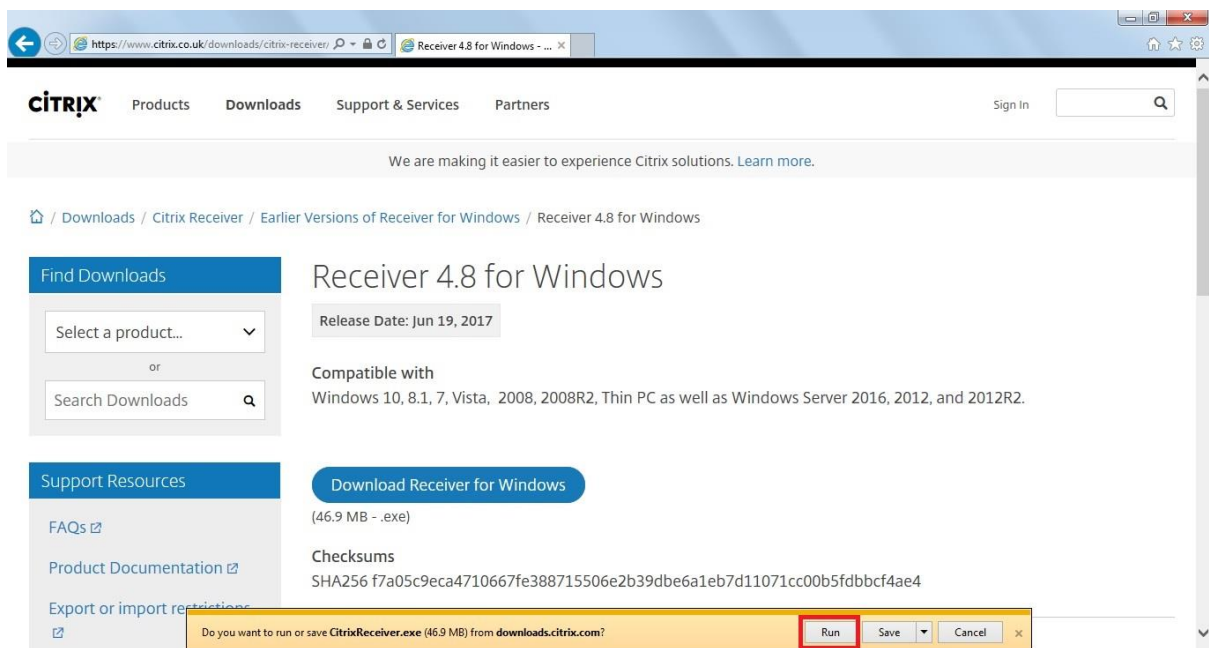
Install required Citrix Plugin if you do not already have it Installed from

Install Citrix : [Link to Citrix Plugin](#) Link



The screenshot shows the Citrix website's download page for Receiver 4.8 for Windows. The page includes a navigation menu with 'Products', 'Downloads', 'Support & Services', and 'Partners'. A search bar is visible in the top right. The main content area displays the product name 'Receiver 4.8 for Windows' with a release date of 'Jun 19, 2017'. Below this, it lists compatible operating systems: 'Windows 10, 8.1, 7, Vista, 2008, 2008R2, Thin PC as well as Windows Server 2016, 2012, and 2012R2'. A prominent blue button labeled 'Download Receiver for Windows' is highlighted with a red rectangular box. Below the button, the file size '(46.9 MB - .exe)' and a SHA256 checksum are provided. A 'Support Resources' sidebar on the left contains links for 'FAQs', 'Product Documentation', and 'Export or import restrictions'. A 'Find Downloads' section with a search bar is also present.

Select Download Receiver for Windows.



This screenshot is identical to the previous one, showing the Citrix website's download page. However, a Windows security warning dialog box is overlaid at the bottom of the page. The dialog box has a yellow background and contains the text: 'Do you want to run or save CitrixReceiver.exe (46.9 MB) from downloads.citrix.com?'. It features three buttons: 'Run', 'Save', and 'Cancel'. The 'Run' button is highlighted with a red rectangular box.

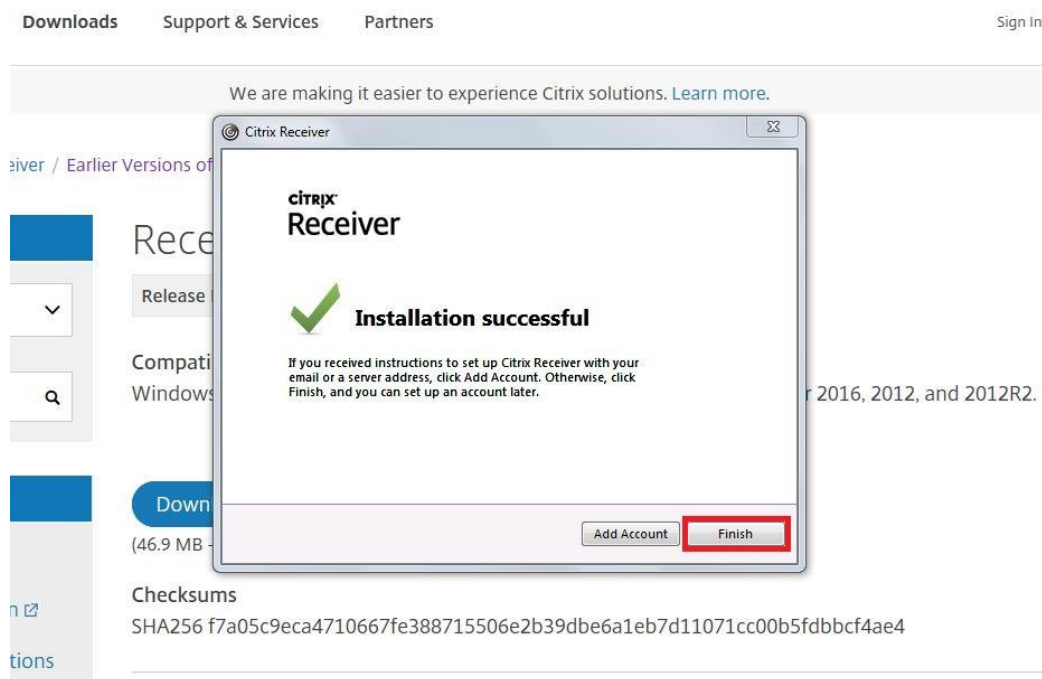
Select Run



Select Start (Wait for Install to Finish)

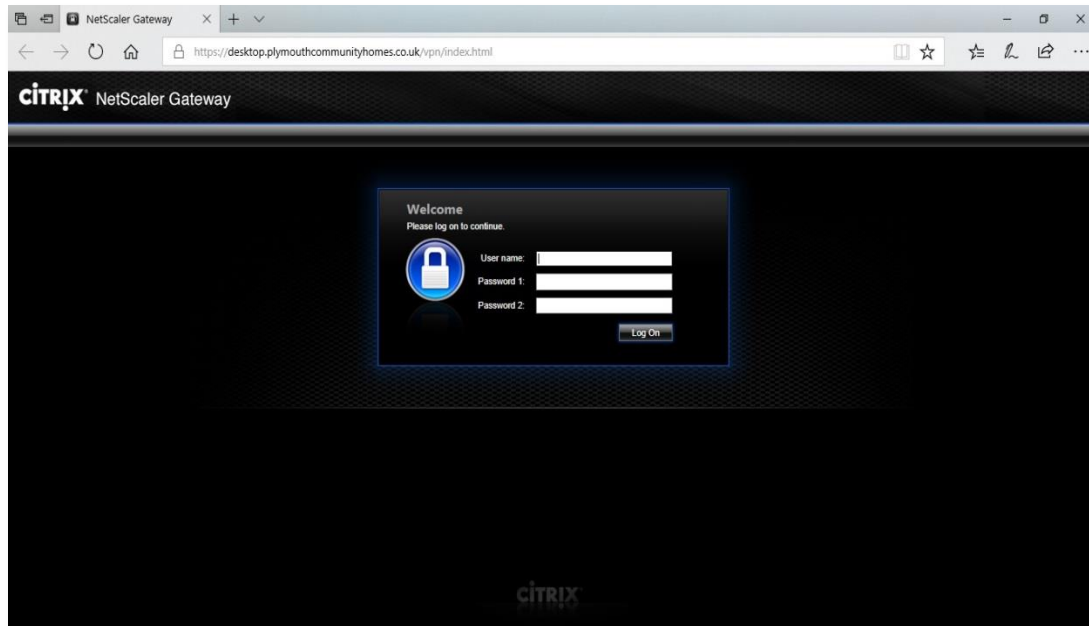
When Installation successful (DO NOT SELECT Add Account)

Select Finish



Select PCH Desktop Access : [Connect to PCH Desktop](#)

Takes you to Citrix Access Gateway login page

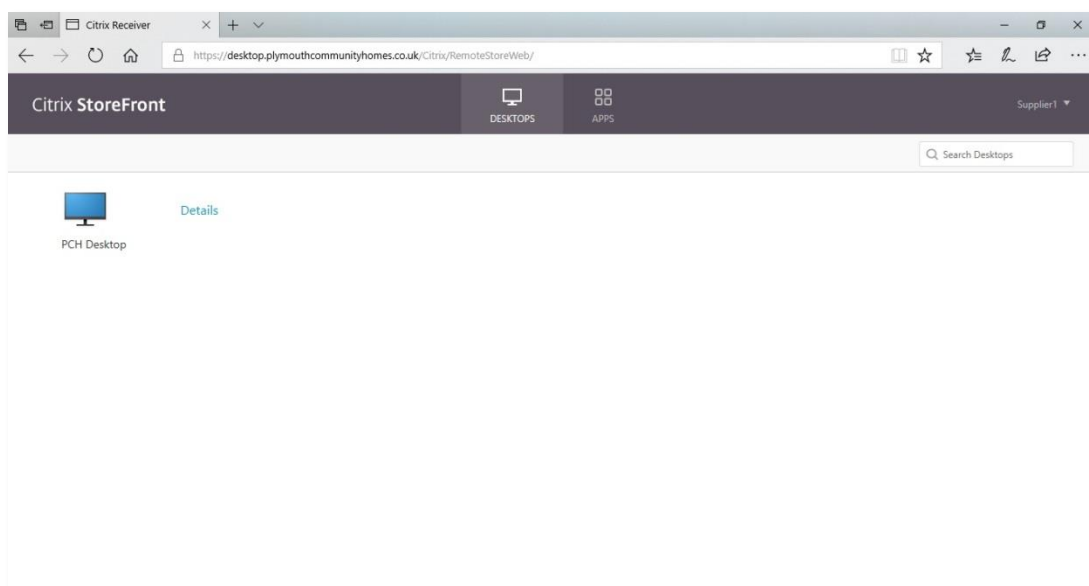


Username is your normal login username when in the office

Password 1 Is password used when in the office

Password 2 Is the 6 digit code supplied from your Vascoe Token

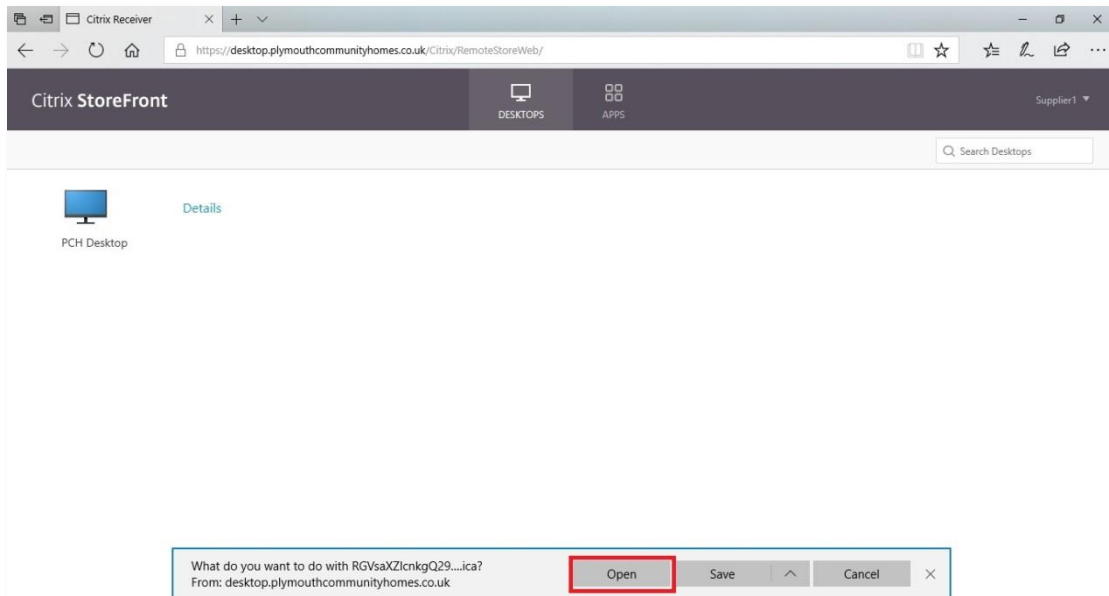
Take you to Storefront Page



Then select Desktop Icon

If using IE11 or lower should then Load Citrix Desktop.

If using Microsoft edge (or Browser that does not support auto run of Active X connection
Select Open Desktop ICA file which appears at the bottom of the page.



Once selected Citrix Desktop loads.